

# HP9117C Series

## High Frequency Online UPS

0.7-3KVA (1 Ph/1 Ph)



### ► Product snapshot:

Model: 0.7-3KVA

Nominal voltage: 60-138VAC or 130-276VAC

Nominal frequency: 50/60Hz

Output Power factor: 0.9

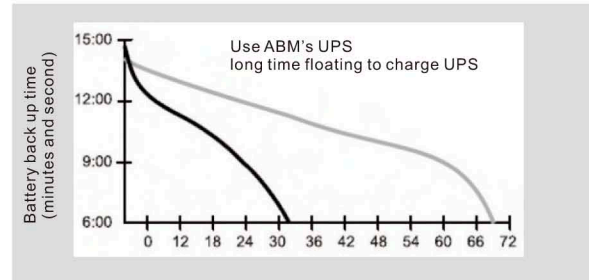
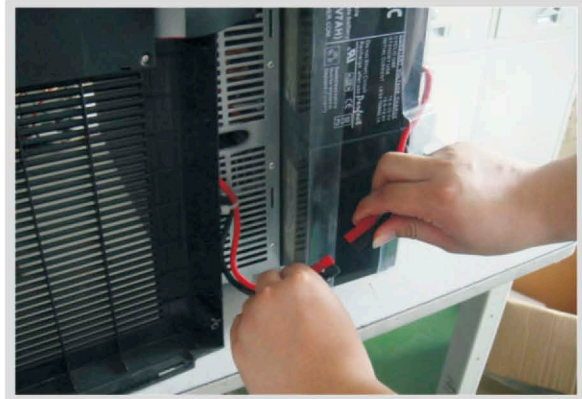
### Safe and reliable protection:

HP9117C series use DSP control technology, double-conversion on-line design. The HP9117C UPS resolves utility power problems and delivers superior power protection for IT and networking equipment, medical systems, manufacturing process control, or anywhere critical equipment and applications require clean, continuous power.

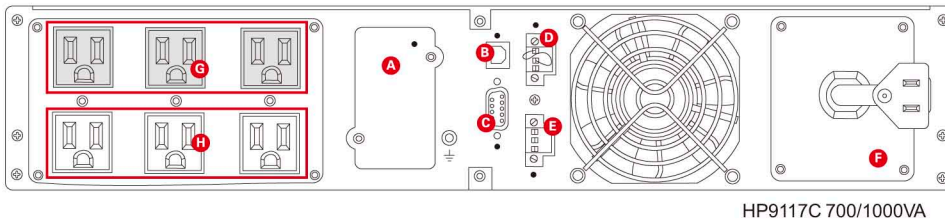
## Key Features:

- Protects against downtime, data loss and process interruption by providing continuous, clean power.
- Offers premium performance with a 0.9 power factor and >95% efficiency.
- Increases battery service life and system uptime with ABM battery charging technology.
- Enables prolonged runtime of essential equipment during power outages by allowing for orderly, remote shutdown of non-critical systems or processes.
- Provides installation flexibility with a choice of rack or tower designs, both conserving valuable space.
- Can replace batteries online, convenient for user to use.
- Enhanced monitoring and configuration capability through easily navigated multilingual graphical LCD display.

## Battery hot-swap:

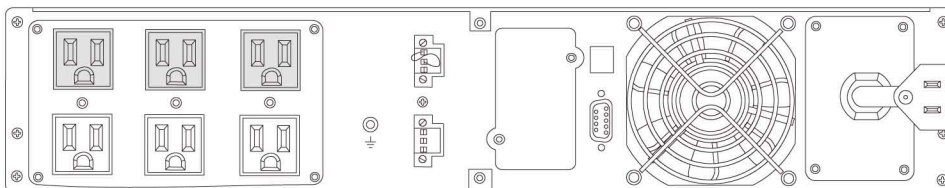


## Back Panel Description:



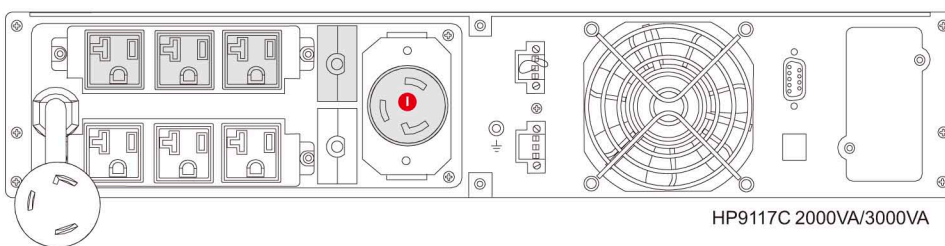
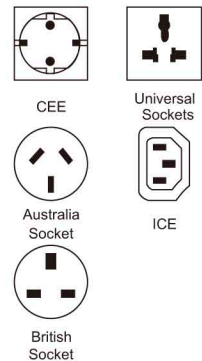
HP9117C 700/1000VA

- A** Intelligent slot
- B** USB
- C** RS232
- D** EPO(emergency power off)
- E** Relay Output
- F** Input
- G** First Load Segment
- H** Second Load Segment
- I** Output



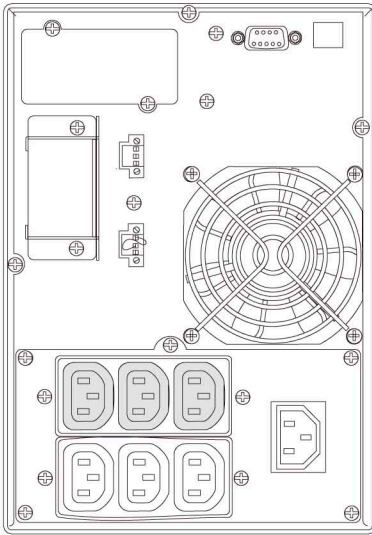
HP9117C 1500VA

### Available sockets

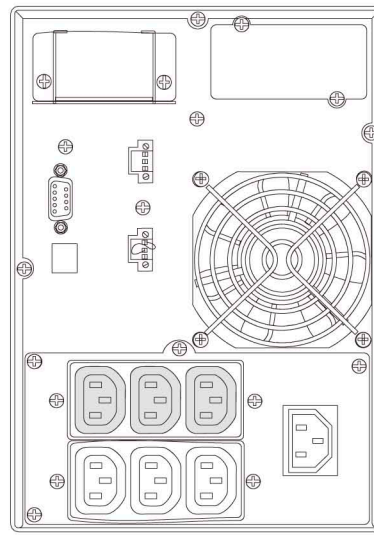


HP9117C 2000VA/3000VA

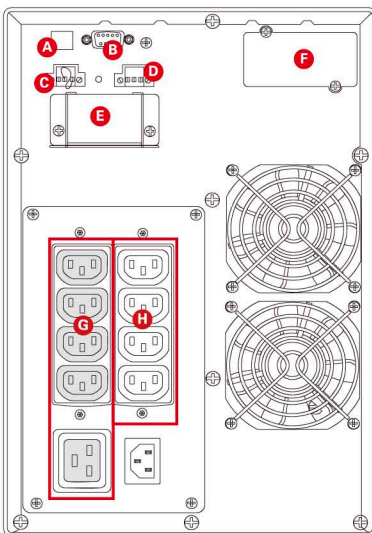
## Back Panel Description(Tower):



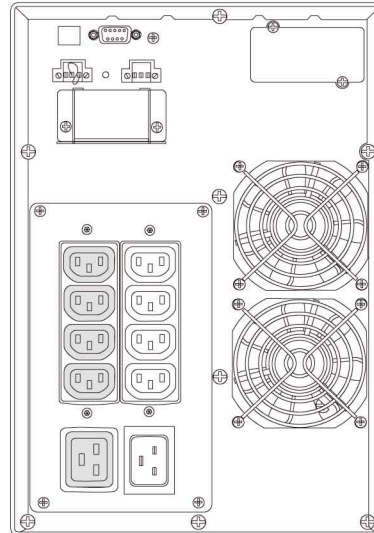
HP9117C 700VA/1000VA



HP9117C 1500VA



HP9117C 2000VA



HP9117C 3000VA

- A** USB
- B** RS232
- C** EPO (emergency power off )
- D** Relay Output
- E** External Battery Connector
- F** Intelligent Slot
- G** First Load Segment
- H** Second Load Segment

### Available sockets



CEE



Universal Sockets



NEMA



Australia Socket



British Socket

## UPS Power Solutions Expert

## HP9117C Series Technical Specifications

Model	HP9117C 0.7-3KVA																					
	0.7KT/0.7KR	0.7KT-XL/0.7KR-XL	1KT/1KR	1KT-XL/1KR-XL	1.5KT/1.5KR	1.5KT-XL/1.5KR-XL	2KT/2KR	2KT-XL/2KR-XL	3KT/3KR	3KT-XL/3KR-XL												
Capacity	0.7KVA/0.63KW		1KVA/0.9KW		1.5KVA/1.35KW		2KVA/1.8KW		3KVA/2.7KW													
Nominal Voltage	100/110/120/127VAC or 200/208/220/230/240VAC																					
Nominal Frequency	50/60 Hz																					
Input																						
Voltage Range	60-138VAC or 115-276VAC																					
Frequency Range	50HZ:(46~54HZ);60HZ:(56HZ~64HZ)																					
Power Factor	>0.98																					
Output																						
Voltage Precision	100/110/120/127VAC (±2%) or 200/208/220/230/240VAC (±2%)																					
Frequency Precision	50Hz/60Hz±0.05Hz																					
Power Factor	0.9																					
Harmonic Distortion	Linear Load < 3% Non-Linear Load < 5%																					
Overload Capacity	100%~102% overload warning; 102%~129% 12s; 130%~149% 2s; ≥ 150% 100ms																					
Current Crest Ratio	3 : 1																					
Transfer Time	0ms (AC→DC)																					
Battery																						
DC Voltage	24VDC		36VDC		48VDC		96VDC		96VDC													
Recharge Time	5 hours to 90% (it mean standard model which battery inside the UPS)																					
Charge Current	1A	4A/8A (option)	1A	4A/8A (option)	1A	4A/8A (option)	1A	4A/8A (option)	1A	4A/8A (option)												
Panel Display																						
LCD	UPS status, input/output voltage and frequency, battery voltage, capacity, load, temperature, history records																					
Language	English, French, German, Russian, Spanish																					
Communications																						
Communications Interface	Optional: SNMP card,AS400 card or the CMC provide software, EPO ,USB port																					
Working Environment																						
Temperature	0 ~ 40 C																					
Relative Humidity	0 ~ 95% (Non-condensing)																					
Storage Temperature	-25 C ~ 55 C																					
Elevation	< 1500 m																					
Noise Level (1m)	< 45dB						< 50dB															
Physics Characteristic																						
Weight (KG)	N.W	13	14	9	10	15	16	8.5	9	18	18.5	10	10.5	33	10.5	16.5	11.5	34	11.5	17	12.5	
	G.W	15	16	11	13	17.5	17.5	11	11.5	20	20.5	12	12.5	35	12.5	18.5	13.5	36	13.5	19	14.5	
Dimensions: (W x D x H)mm																						
Main unit (Tower)		158X355X250				158X385X250				158X433X250				220X410X345				220X410X345				
Main unit (Rack mount)		482.6X450X89 (2U)																				

STANDARD: Conform to GB/IEC regulation : EMC: GB7260.2/IEC62040-2

GB/17626.2~5/IEC61000-4-2~5

SAFETY:GB4943

Note: Product specifications are subject to change without further notice.