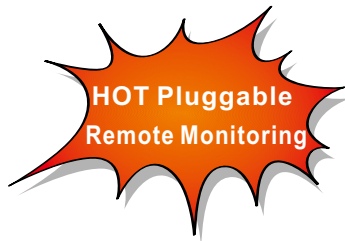


# SHW48500

Solar Power System for Telecom Station



## Product Snapshot

Nominal voltage: 48VDC 50-500A

### Application

Power plant or substation power for controlling, protection and automatic device, emergency lighting, communications, steam turbine DC oil pump and so on independent DC system. It can provide reliable power supply in the case of a power failure completely in plant or substation. The traditional DC systems connect battery pack and run with float charging mode. The new DC system run with silicon controlled rectifying power supply for battery.

### Fine dust-proof, water-proof features

According to the overall standard of design dust-proof and water-proof Ip55

- With sun protection, heat insulation, roof ventilation
- With waterproof and the filtration dust inlet, the cabinet front door shutters with waterproof design.

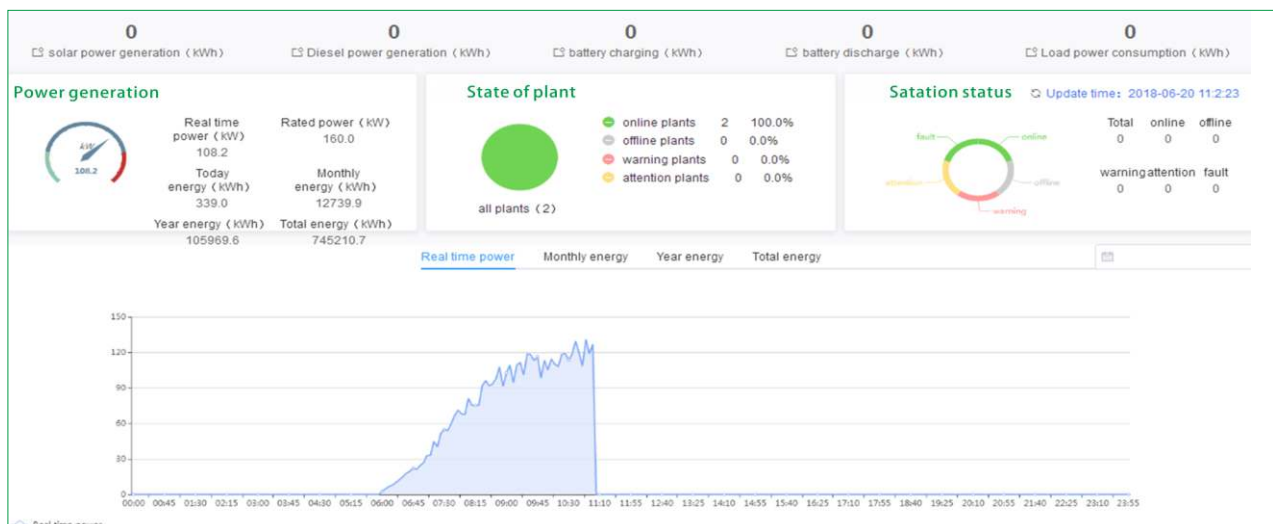




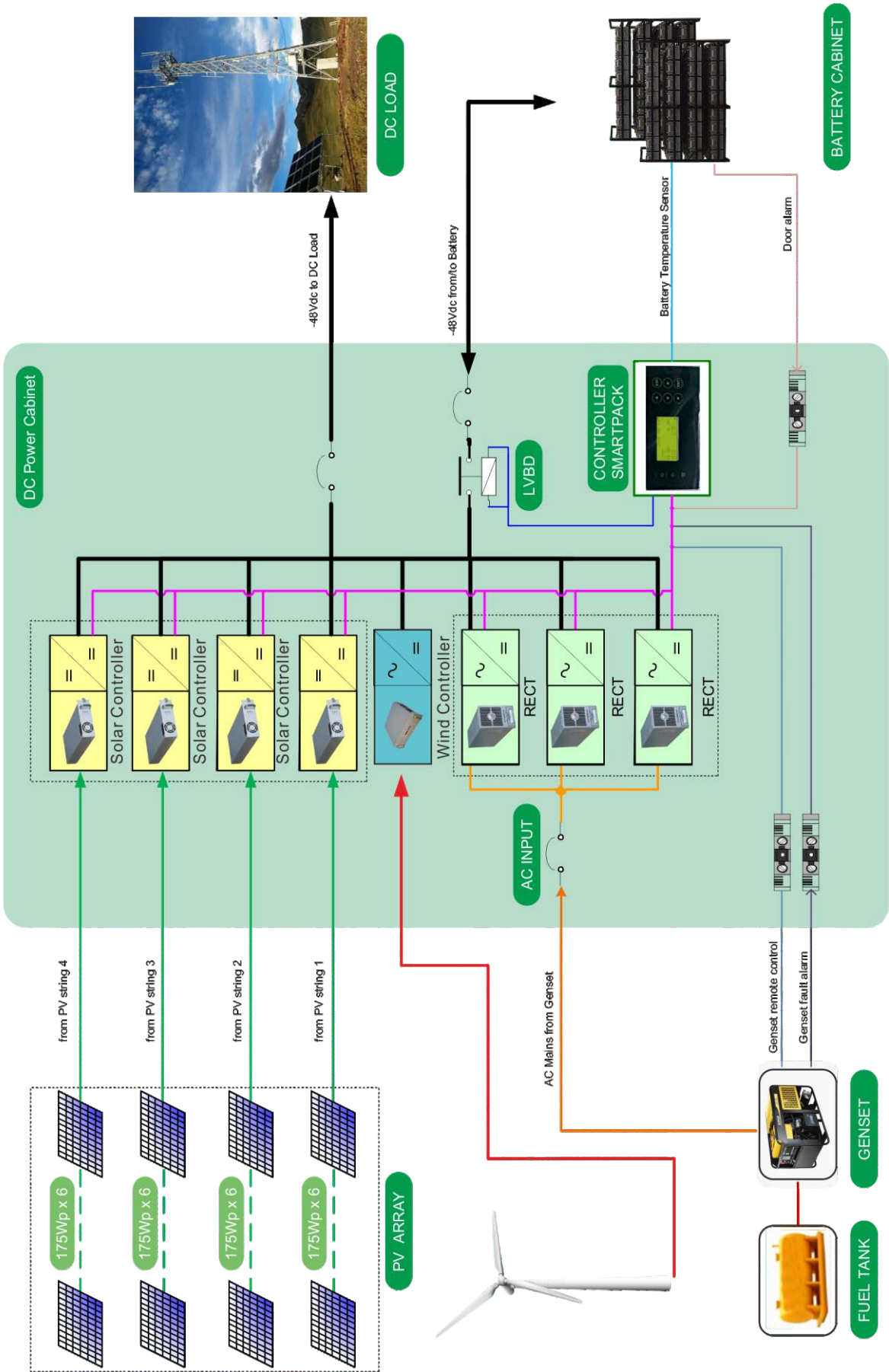
### Key Features:

- Adopt advanced MCU microprocessor control technology.
- Advanced MPPT Technology, High converting efficiency higher than 97% for minimizing energy loss.
- Reversed current protection at night, over voltage and reverse polarity protection.
- Capable of selecting different charging mode for various types of batteries.
- **Protection degree: IP55**
- Industry-leading power density compact size and high reliability;
- Doorframe designed with waterproof structure, posted on the seal and equipped with waterproof lock on the door double insulation design;
- Cabine adopt quality galvanized sheet or aluminum coated steel sheet as material, surface coating anti-UV power;
- Suitable for outdoor installation.
- **With remote monitoring system operation**

### Remote Monitoring System Interface



Application:



## SHW48500 Solar DC Power System

SHW48500 Solar System	Rectifier Module(1-10)	MPPT Solar Charge Controller(1-10)
<b>INPUT</b>		
MPPT Range @Operating Voltage	60 ~115VDC	
Maximum PV Array Open Circuit Voltage	145VDC	
Maximum PV Array Power	3000W	
Maximum Input Current	50A	
<b>OUTPUT</b>		
Nominal Battery Voltage	42-58VDC	
Maximum Charge Current	50A	
Maximum Efficiency	98%	
Charging Method	Three stages: bulk, absorption and floating	
<b>PROTECTION</b>		
Overload Protection	> 110% : audible alarm	
Overcharge Protection	Yes	
Polarity Reversal Protection @ Solar Cell & Battery	Yes	
<b>INDICATORS</b>		
LCD Panel	LCD panel indicating solar power, load level, battery voltage/capacity, charging current, and fault conditions	
LED Display	Three indicators for solar, charging, and load status	
<b>Rectifier Module</b>		
Rated input voltage	220V	
AC input Voltage range	90-290V	
AC input Frequency range	45-65HZ	
Power factor	≥0.99	
Efficiency	>92%	
Rated output voltage	48V	
Rated output current	0-50A	
Voltage range	42-58V	
<b>WIND CONTROLLER:</b>		
Input Power	1KW/2KW	
Input Voltage	150-300VAC	
Output Voltage	48VDC	
Output Current	30A/50A	
<b>ENVIRONMENT</b>		
Humidity	0 ~ 100% RH (No condensing)	
Operating Temperature	-20°C to 55°C	
Storage Temperature	-40°C to 75°C	
Altitude	0 ~ 3000 m	

STANDARD:EMC 62040 EN 55032 LCD:EN60950

Note: Product specifications are subject to change without further notice.