

HW9116C PLUS Series



Integrated Outdoor Online UPS 1-10KVA

Product snapshot:

- > Model: 1-10KVA
- > Nominal voltage: 220/230/240VAC
- > Nominal frequency: 50/60Hz
- > Output Power factor: 0.9
- > IP55



Telecom



Industry



Local area
Networks

Reliable power Rich experience

HW9116C plus series communication marginal network outdoor UPS is special for wireless communication system of outdoor micro cellular base station and design of a high-performance integrated outdoor online uninterrupted power supply system, has the very high technology advancement and practicability.

Key Features:

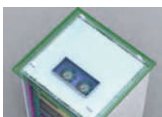
- SORO Outdoor Intelligent High Frequency Online UPS provide continuous pure sine wave AC power supply for outside communications / network equipment.
- Double-conversion online design, high temperature resistant, anti-cold, sealing level for IP55; With the wide range of input voltage and frequency of input window (-45% +35% rated voltage and $\pm 10\%$ rated frequency), in many remote areas of China after a severe test of the grid.

Application

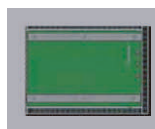
This UPS is commonly used in the corner of the city, remote roads, mountains, bad environment, such as high temperature (+50 °C) / low temperature (-40°C), severe dust, moisture, rain, erosion, very poor power quality areas.

Security features

Solid chassis box



Fixed base case



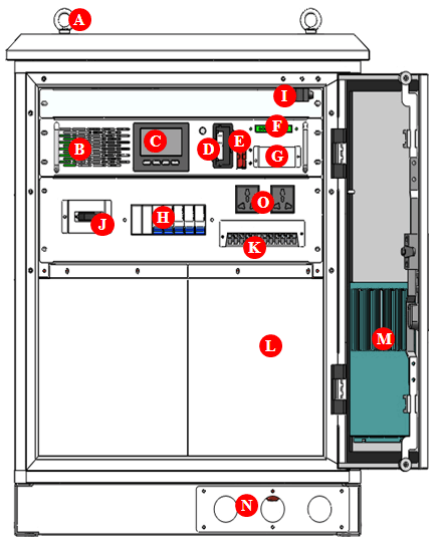
High Reliability of the UPS System

- Using microprocessor control, directly produce high-frequency pulse width modulation wave (SPWM) control of the UPS inverter, to simplify the UPS control circuit, to improve the stability, to have more real-time UPS to quickly respond to changes in the external environment and guarantee the machine's control circuit is more simple and reliable.
- Using digital control techniques, to avoid the traditional analog control temperature drift inherent defects such as hardware parameters, to ensure consistency and reliability of UPS.

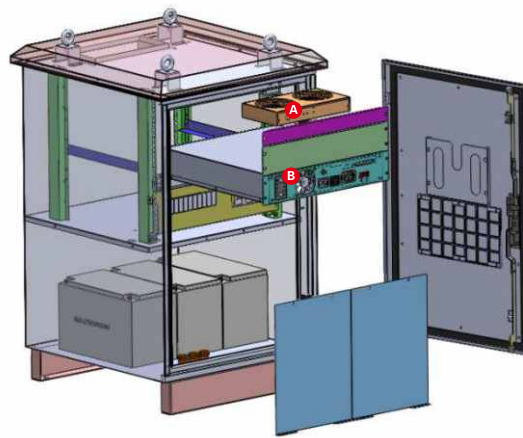
Fine dust-proof, water-proof features

According to the overall standard of design dust-proof and water-proof IP55

- With a sun protection, heat insulation, roof ventilation
- With waterproof and the filtration dust inlet; the cabinet front door shutters with waterproof design, on the back of welding water tank, water tank installed above the net with quick release feature of the dust.



- A Rings
- B Air flue
- C LCD display screen
- D SNMP card port
- E Access switch Battery input
- F Dry contact
- G Input terminal
- H Breaker
- I Access switch
- J Maintenance switch
- K Output terminal
- L Battery cabinet
- M Waterproof filter
- N Wire input/output port
- O Output socket



- A fan module
- B main machine module

Environmental adaptability

- Wide input voltage, avoids frequent switching to battery power because of large power grid voltage, reduce battery failure probability, adapt to the power environment in poor areas.
- Input Frequency Range 40-70Hz, to ensure the fuel generator can access all kinds of stability to meet user requirements for use on the oil machine.



Optional accessories

Heat exchanger

The environment which require higher IP level, we use heat exchanger to effectively reduce the temperature of box inside and improve IP protection level .

Heater and temperature controller

To reduce low temperature climate impact to batteries and UPS, we adopt ajustable heating device to ensure the UPS and battery life of normal use.



UPS Power Solutions Expert

HW9116C Plus Series Technical Specifications

Model	HW9116C PLUS 1-10KVA				
	1KVA	2KVA	3KVA	6KVA	10KVA
Capacity	1KVA/0.9KW	2KVA/1.8KW	3KVA/2.7KW	6KVA/5.4KW	10KVA/9KW
Nominal Voltage	220/230/240VAC				
Nominal Frequency	50Hz/60Hz				
Input					
Voltage Range	115~300VAC (±3VAC)			120~275VAC (±3VAC)	
Frequency Range	40-70Hz				
Power Factor	0.98				
Output					
Voltage Precision	220/230/240X (1±2%)VAC				
Frequency Precision	50/60HZ±0.05Hz				
Power Factor	0.9				
THDV	Linear load<4% Non-linear load<10%			Linear load < 2% Non-linear load < 4%	
Overload Capability	load≥108%±5% for 60s;load≥130%±5% for 20-30s;load≥200%±5% for 300ms			105%-125% for1min;125-150%for 30s; > 150%for 0.5s	
Crest Factor	3 : 1				
Transfer Time	0ms (AC to DC)				
Battery					
DC Supply Voltage	24/36/48VDC	48/72VDC	96VDC	192VDC	192VDC
Charge Current	6A	6A	6A	4.2A	4.2A
Internal Battery Capacity	(38/65/80/100AH) optional				
Panel Display					
LCD	Load level/Battery level, Battery indicator,Utility power, Inverter, Bypass, Overload, Fault				
Communications					
communicate interface	RS232、SNMP card (optional)				
Work Environment					
Protection level	IP55				
Temperature	-40~55°C				
Humidity	0~95% (Non-condensing)				
Storage Temperature	-25°C~55°C				
Operation Altitude	< 1500m				
Physical Characteristics					
Weight (KG) N.W	85	125	125	150	155
Dimensions (Wx D x H)mm	620*450*805	620*500*1085	620*600*1085	650*900*1600	650*900*1600

STANDARD: Conform to GB/IEC regulation: EMC:GB7260.2/IEC62040-2 -GB/17626.2~5/IEC61000-4-2~5 SAFETY:GB4943

Note: Product specifications are subject to change without further notice.